

January 1, 2004

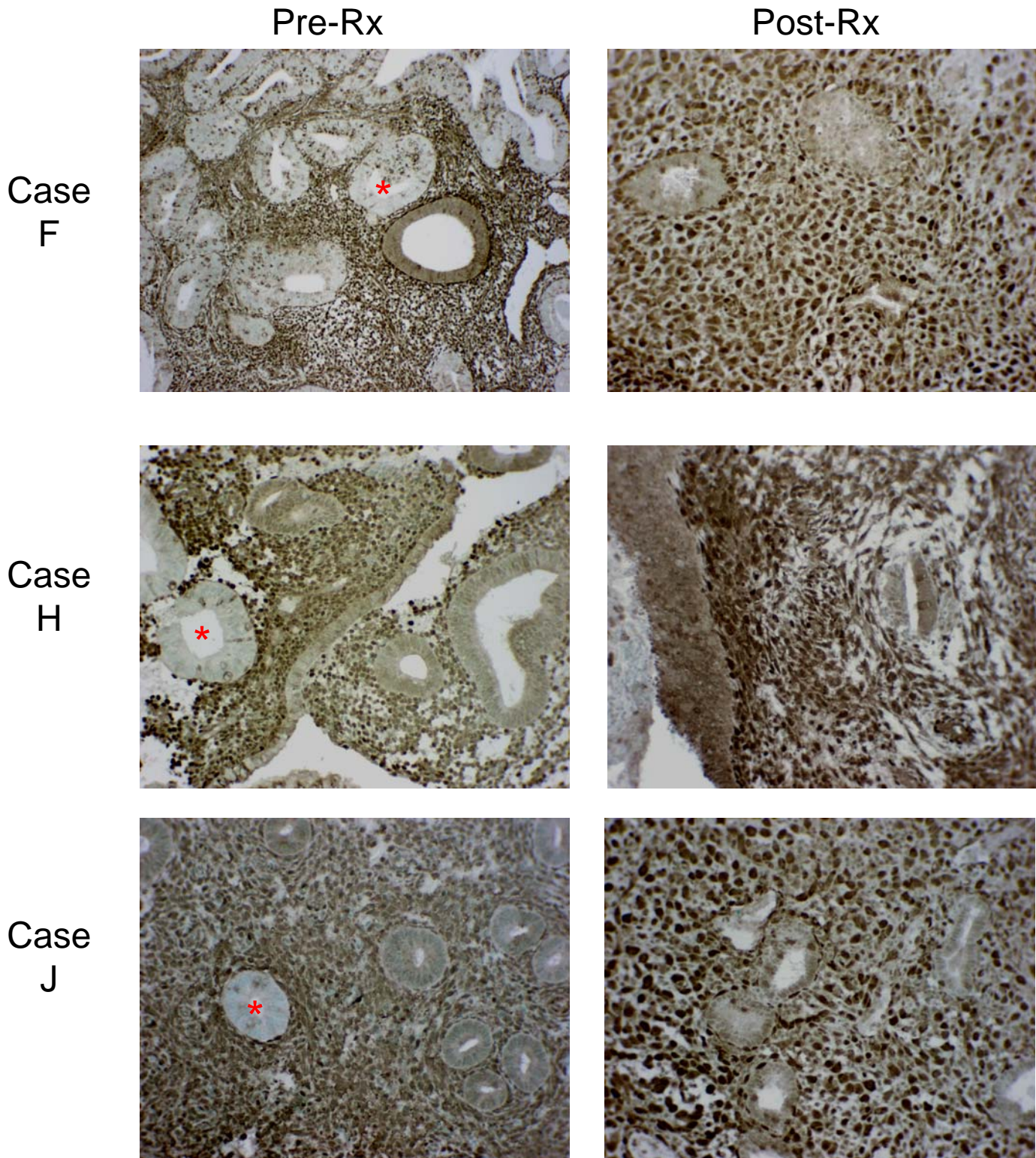
Supplemental Materials for:
Zheng W, Baker HE, and Mutter GL.
Involution of PTEN-Null Endometrial Glands with progestin therapy.
Gynecol. Oncol: 2004.

Contents:

1. Pages 2-4:
Photomicrographs of all 9 cases having involution of PTEN-Null glands upon progestin therapy.
2. Page 5:
Concordance Table showing Original WHO diagnoses of studied cases, vs. diagnoses rendered using EIN criteria.

Supplemental Materials for:
Zheng W, Baker HE, and Mutter GL. Involvement of PTEN-Null Endometrial Glands with progestin therapy.
Gynecol. Oncol: 2004.

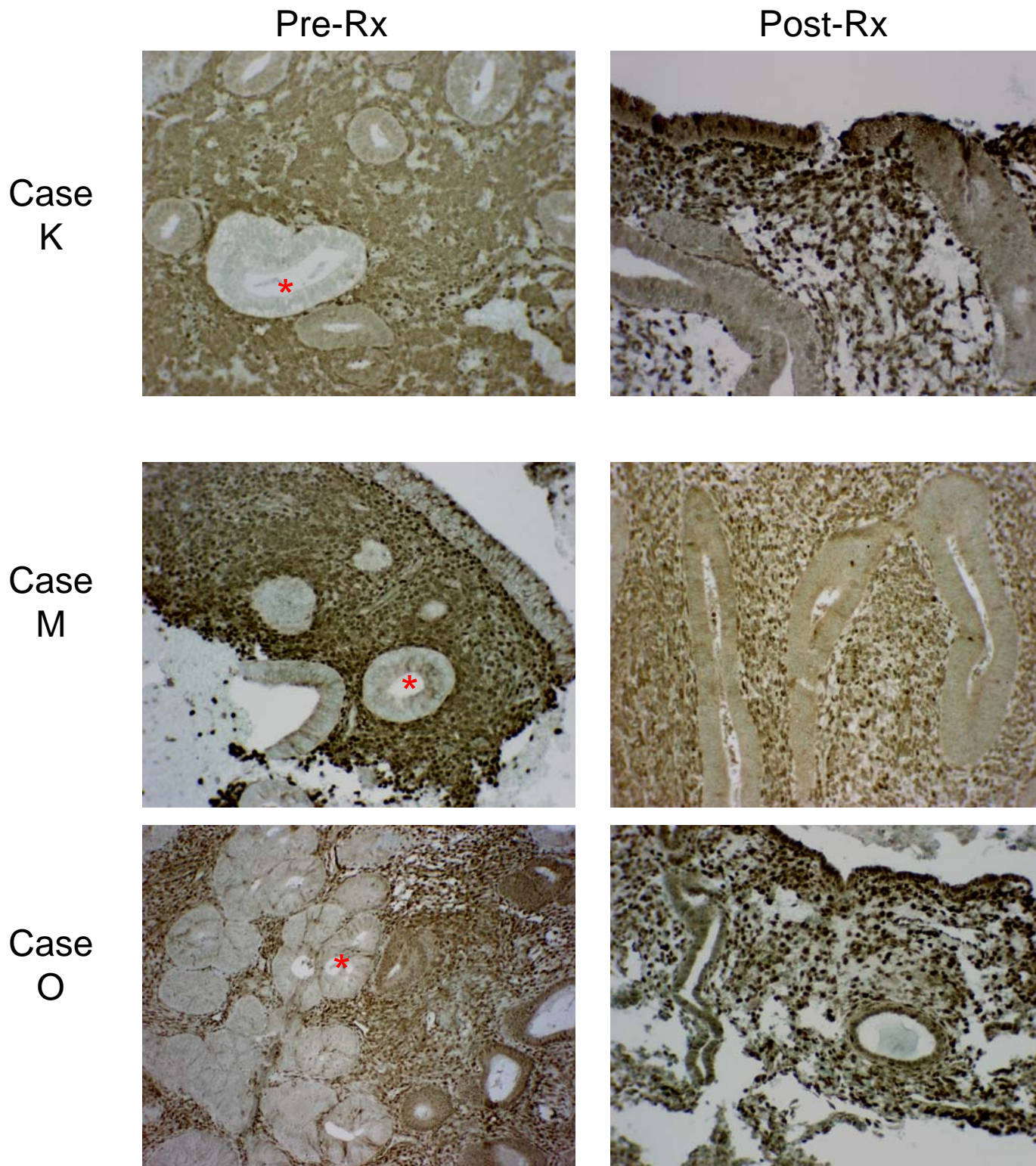
PTEN Immunohistochemistry of Cases with Involved Glands. PTEN-Null glands in pre-treatment panel (Asterix), which are no longer present following progestin therapy (post-Rx Panel)



Supplemental Materials for:

Zheng et al, 2004 Involution of PTEN-Null Endometrial Glands with progestin therapy. Gynecol. Oncol: 2004.

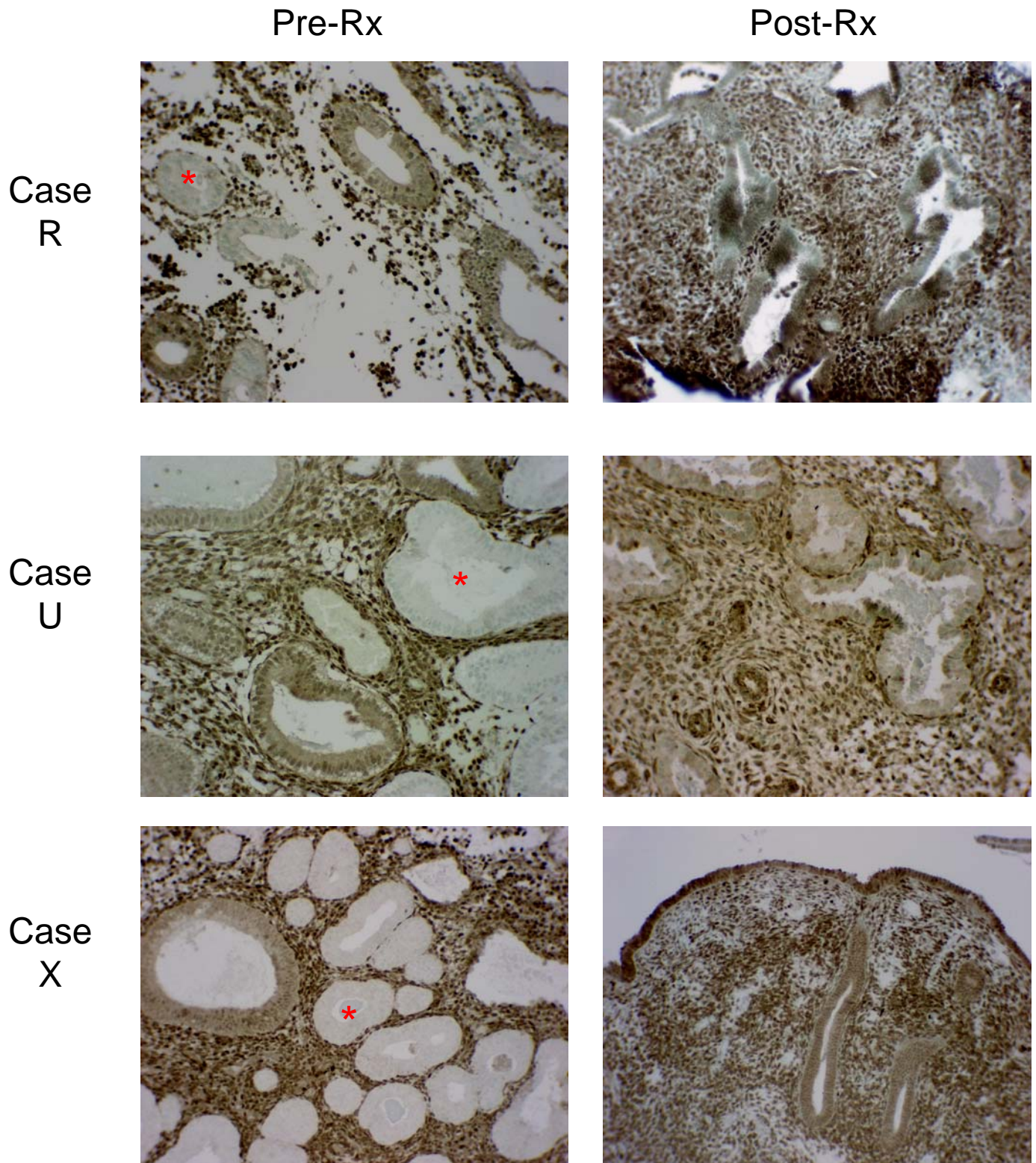
PTEN Immunohistochemistry of Cases with Involuted Glands. PTEN-Null glands in pre-treatment panel (Asterix), which are no longer present following progestin therapy (post-Rx Panel)



Supplemental Materials for:

Zheng et al, 2004 Involution of PTEN-Null Endometrial Glands with progestin therapy. Gynecol. Oncol: 2004.

PTEN Immunohistochemistry of Cases with Involuted Glands. PTEN-Null glands in pre-treatment panel (Asterix), which are no longer present following progestin therapy (post-Rx Panel)



Supplemental Materials for:

Zheng et al, 2004 Involution of PTEN-Null Endometrial Glands with progestin therapy. *Gynecol. Oncol.* 2004.

Table of reviewed EIN schema diagnoses by original report WHO hyperplasia diagnoses.

Patient	EIN Dx	WHODx
a	ein	ACH
b	anov	SH
c	ein	ACH
d	emp	CH
f	anov	ACH
h	ein	ACH
i	emp	SH
j	emp	ASH
k	se	CH
m	anov	ASH
o	ein	ACH
q	pe	SH
r	anov	ACH
t	se	SH
u	se	CH
x	ein	ASH
y	se	CH

Note that EIN diagnoses are based upon different criteria than WHO hyperplasia diagnoses, so there is no direct translation between them. For details see the following:

•Mutter GL. Diagnosis of premalignant endometrial disease. *J Clin Pathol* 2002; 55(5):326-331.

•Mutter GL, Nogales F, Kurman R, Silverberg S, Tavassoli F, et al. Endometrial Cancer. In: Tavassoli FA, Stratton MR, editors. *WHO Classification of Tumors: Pathology and Genetics, Tumors of the Breast and Female Genital Organs*. Lyon, France: IARC Press, 2003.

EIN schema Key:

EIN=endometrial intraepithelial neoplasia
 ANOV=proliferative type endometrium consistent with anovulatory cycle
 EMP=endometrial polyp
 PE=proliferative endometrium
 SE=secretory endometrium

WHO schema Key:

ASH= atypical simple hyperplasia
 ACH= atypical complex hyperplasia
 CH= complex hyperplasia, no atypia
 SH = simple hyperplasia, no atypia